

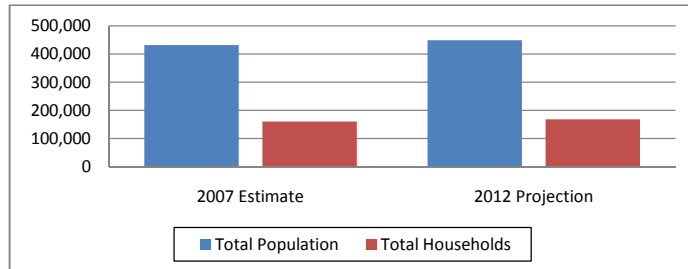


Laurinburg/Maxton Airport Industrial Park (30 mile radius)  
 NC Highway 74 Laurinburg, NC 28352  
 Lat: 34.761166 Long:-79.368027  
 Laurinburg Pop: 25,706 Scotland County Pop: 37,601

## Regional Data Summary Report

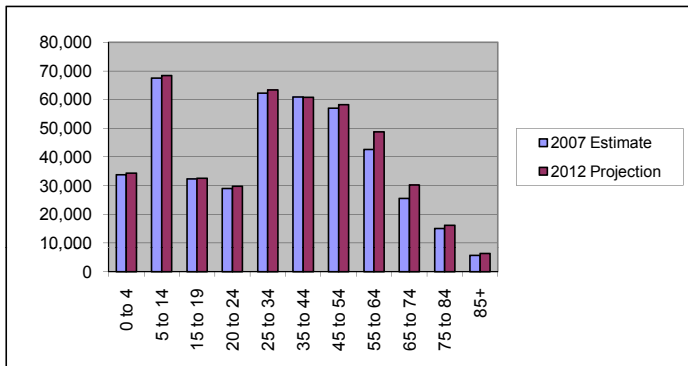
### Population & Households

	2007 Estimate	2012 Projection	Percent Change 2007 to 2012
Total Population	431,898	449,055	4.0%
Population Density (Pop/Sq Mi)	152.8	158.8	4.0%
Total Households	160,102	168,716	5.4%
<b>Population by Gender:</b>			
Male	210,698	219,758	4.3%
Female	221,200	229,297	3.7%



### Population by Age

	2007 Estimate	2012 Projection	Percent Change 2007 to 2012
0 to 4	33,836	34,316	1.4%
5 to 14	67,550	68,438	1.3%
15 to 19	32,302	32,559	0.8%
20 to 24	28,976	29,751	2.7%
25 to 34	62,307	63,371	1.7%
35 to 44	60,911	60,845	-0.1%
45 to 54	57,019	58,289	2.2%
55 to 64	42,636	48,724	14.3%
65 to 74	25,580	30,242	18.2%
75 to 84	15,097	16,174	7.1%
85+	5,688	6,346	11.6%

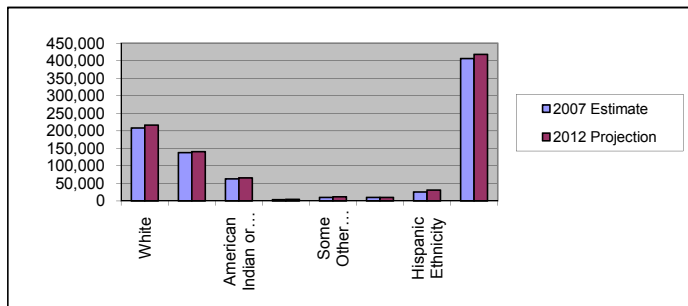


#### Median Age:

	2007 Estimate	2012 Projection	Percent Change 2007 to 2012
Total Population	33.6	34.4	2.5%

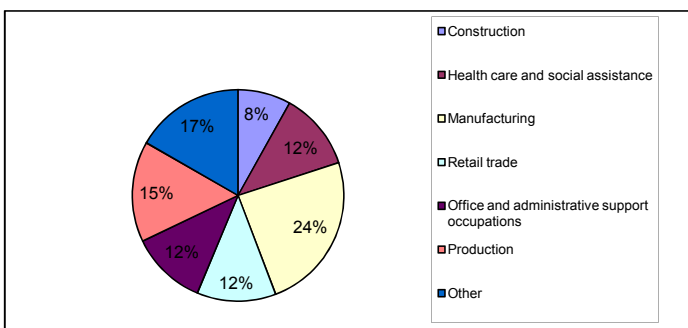
### Population by Race/Ethnicity

	2007 Estimate	2012 Projection	Percent Change 2007 to 2012
White	207,823	216,429	4.1%
Black	137,507	140,239	2.0%
American Indian or Alaska Native	62,799	66,160	5.4%
Asian or Pacific Islander	4,013	4,221	5.2%
Some Other Race	10,019	12,150	21.3%
Two or More Races	9,737	9,855	1.2%
Hispanic Ethnicity	25,883	31,394	21.3%
Not Hispanic or Latino	406,015	417,662	2.9%



### Employment by Industry

	2000 US Census
Construction	8.1%
Health care and social assistance	11.9%
Manufacturing	24.2%
Retail trade	12.1%
Office and administrative support occupations	11.6%
Production	15.4%
Other	16.7%





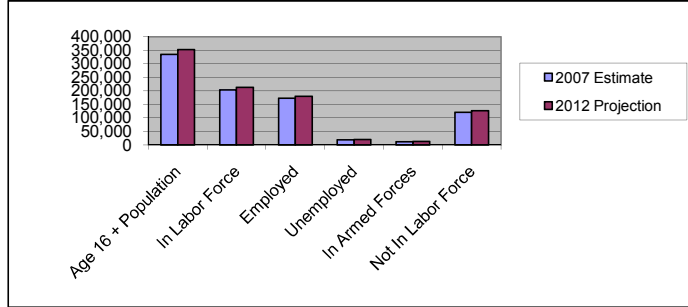
Laurinburg/Maxton Airport Industrial Park (30 mile radius)  
 NC Highway 74 Laurinburg, NC 28352  
 Lat: 34.761166 Long:-79.368027  
 Laurinburg Pop: 25,706 Scotland County Pop: 37,601

## Regional Data Summary Report

### Labor Force

	2007 Estimate	2012 Projection	Percent Change 2007 to 2012
Age 16 + Population	335,379	352,529	5.1%
In Labor Force	203,197	213,062	4.9%
Employed	172,465	180,002	4.4%
Unemployed	19,165	20,099	4.9%
In Armed Forces	11,568	12,962	12.0%
Not In Labor Force	120,614	126,506	4.9%

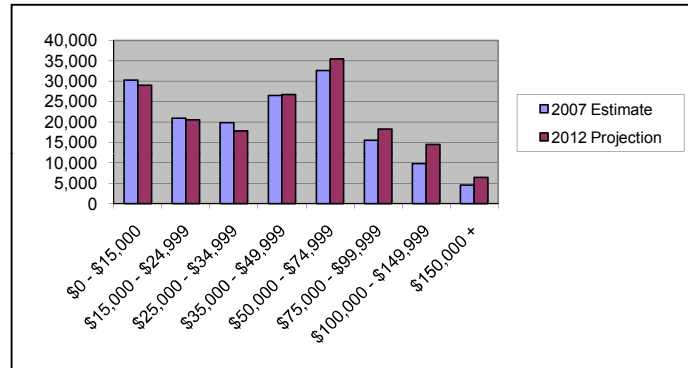
2007 Number of Employees (Daytime Population)	130,975
2007 Number of Employers	11,742



### Households by Income

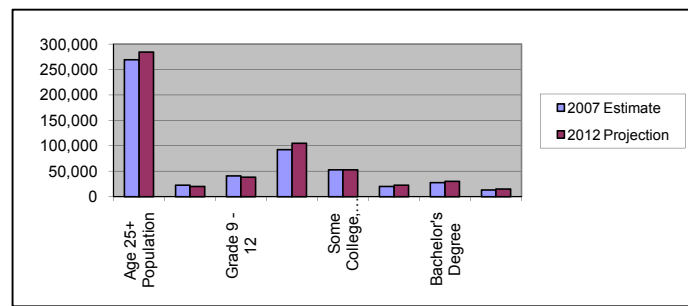
	2007 Estimate	2012 Projection	Percent Change 2007 to 2012
\$0 - \$15,000	30,244	29,038	-4.0%
\$15,000 - \$24,999	20,957	20,518	-2.1%
\$25,000 - \$34,999	19,861	17,772	-10.5%
\$35,000 - \$49,999	26,518	26,727	0.8%
\$50,000 - \$74,999	32,615	35,415	8.6%
\$75,000 - \$99,999	15,515	18,247	17.6%
\$100,000 - \$149,999	9,835	14,531	47.7%
\$150,000 +	4,556	6,468	42.0%

Average Hhld Income	\$44,219	\$46,148	4.4%
Median Hhld Income	\$39,895	\$44,486	11.5%
Per Capita Income	\$17,056	\$18,086	6.0%



### Level of Educational Attainment

	2007 Estimate	2012 Projection	Percent Change 2007 to 2012
Age 25+ Population	269,238	283,992	5.5%
Grade K - 8	22,444	20,400	-9.1%
Grade 9 - 12	40,572	38,080	-6.1%
High School Graduate	92,510	105,064	13.6%
Some College, No Degree	52,821	52,985	0.3%
Associates Degree	20,187	22,461	11.3%
Bachelor's Degree	27,401	30,129	10.0%
Graduate Degree	13,302	14,873	11.8%



Current year data is for the year 2007. 5 year projected data is for the year 2012. More About Our Data.  
 Demographic data © 2007 by Experian/Applied Geographic Solutions.

© 2007. DemographicsNow is brought to you by SRC, LLC.

SRC, DemographicsNow.com and the SRC and DemographicsNow.com logos are trademarks of SRC, LLC. All rights reserved.