

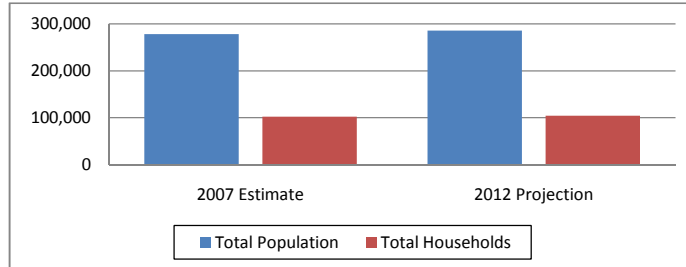


Currie Site (30 mile radius)  
 Rocky Ford Road (SR 1610) Maxton, NC 28340  
 Lat: 34.450359 Long:-79.242363  
 Maxton Pop: 11,836 Robeson County Pop: 129,627

## Regional Data Summary Report

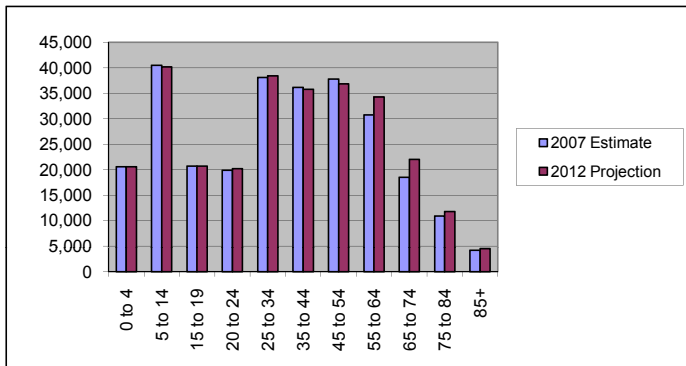
### Population & Households

	2007 Estimate	2012 Projection	Percent Change 2007 to 2012
Total Population	278,100	285,379	2.6%
Population Density (Pop/Sq Mi)	98.4	100.9	2.6%
Total Households	102,010	104,596	2.5%
<b>Population by Gender:</b>			
Male	134,059	138,543	3.3%
Female	144,042	146,836	1.9%



### Population by Age

	2007 Estimate	2012 Projection	Percent Change 2007 to 2012
0 to 4	20,605	20,557	-0.2%
5 to 14	40,495	40,180	-0.8%
15 to 19	20,698	20,698	0.0%
20 to 24	19,915	20,223	1.5%
25 to 34	38,089	38,430	0.9%
35 to 44	36,156	35,772	-1.1%
45 to 54	37,781	36,847	-2.5%
55 to 64	30,738	34,278	11.5%
65 to 74	18,499	22,037	19.1%
75 to 84	10,944	11,819	8.0%
85+	4,183	4,545	8.7%

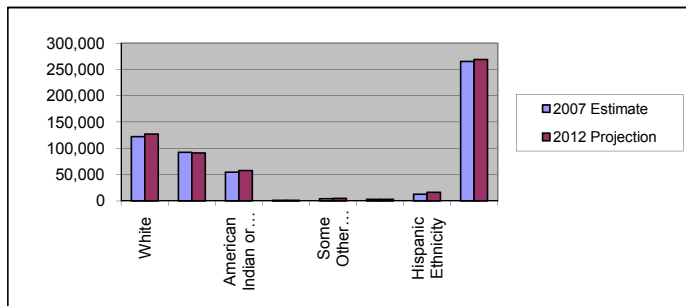


#### Median Age:

	2007 Estimate	2012 Projection	Percent Change 2007 to 2012
Total Population	34.8	35.7	2.6%

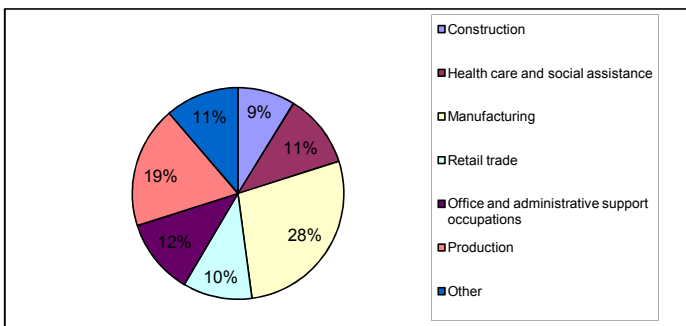
### Population by Race/Ethnicity

	2007 Estimate	2012 Projection	Percent Change 2007 to 2012
White	122,311	126,920	3.8%
Black	92,360	91,577	-0.8%
American Indian or Alaska Native	54,923	57,522	4.7%
Asian or Pacific Islander	1,255	1,458	16.2%
Some Other Race	4,004	5,029	25.6%
Two or More Races	3,247	2,870	-11.6%
Hispanic Ethnicity	12,994	16,645	28.1%
Not Hispanic or Latino	265,106	268,734	1.4%



### Employment by Industry

	2000 US Census
Construction	8.8%
Health care and social assistance	11.3%
Manufacturing	27.8%
Retail trade	10.6%
Office and administrative support occupations	11.6%
Production	18.6%
Other	11.3%





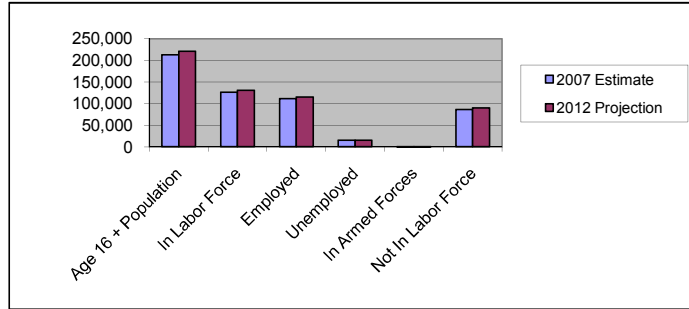
Currie Site (30 mile radius)  
 Rocky Ford Road (SR 1610) Maxton, NC 28340  
 Lat: 34.450359 Long:-79.242363  
 Maxton Pop: 11,836 Robeson County Pop: 129,627

## Regional Data Summary Report

### Labor Force

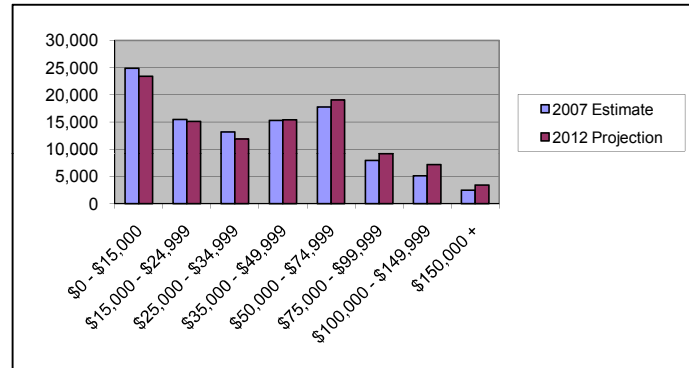
	2007 Estimate	2012 Projection	Percent Change 2007 to 2012
Age 16 + Population	213,168	220,832	3.6%
In Labor Force	126,451	130,892	3.5%
Employed	111,349	115,251	3.5%
Unemployed	14,881	15,400	3.5%
In Armed Forces	221	241	9.1%
Not In Labor Force	86,496	89,699	3.7%

2007 Number of Employees (Daytime Population)	92,543
2007 Number of Employers	8,046



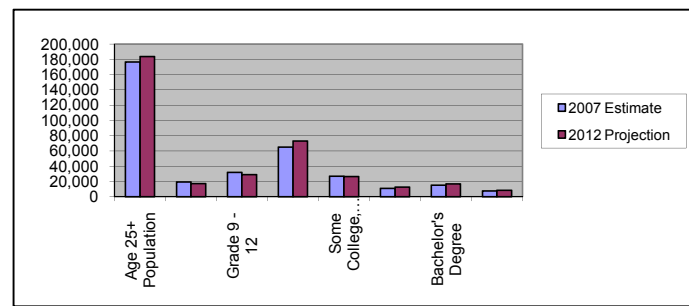
### Households by Income

	2007 Estimate	2012 Projection	Percent Change 2007 to 2012
\$0 - \$15,000	24,870	23,429	-5.8%
\$15,000 - \$24,999	15,449	15,102	-2.2%
\$25,000 - \$34,999	13,160	11,858	-9.9%
\$35,000 - \$49,999	15,274	15,384	0.7%
\$50,000 - \$74,999	17,780	19,082	7.3%
\$75,000 - \$99,999	7,920	9,164	15.7%
\$100,000 - \$149,999	5,097	7,177	40.8%
\$150,000 +	2,459	3,400	38.3%
Average Hhld Income	\$39,197	\$41,009	4.6%
Median Hhld Income	\$32,869	\$36,580	11.3%
Per Capita Income	\$15,001	\$15,758	5.0%



### Level of Educational Attainment

	2007 Estimate	2012 Projection	Percent Change 2007 to 2012
Age 25+ Population	176,390	183,726	4.2%
Grade K - 8	19,248	17,197	-10.7%
Grade 9 - 12	31,744	29,075	-8.4%
High School Graduate	64,978	73,090	12.5%
Some College, No Degree	26,981	26,560	-1.6%
Associates Degree	10,982	12,744	16.0%
Bachelor's Degree	15,070	16,874	12.0%
Graduate Degree	7,387	8,186	10.8%



Current year data is for the year 2007. 5 year projected data is for the year 2012. More About Our Data.  
 Demographic data © 2007 by Experian/Applied Geographic Solutions.

© 2007. DemographicsNow is brought to you by SRC, LLC.

SRC, DemographicsNow.com and the SRC and DemographicsNow.com logos are trademarks of SRC, LLC. All rights reserved.