

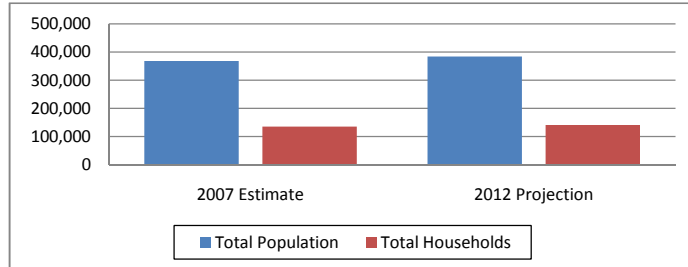


Dickerson Site (30 mile radius)
 US Highway 74 Laurinburg, NC 28352
 Lat: 34.762166 Long:-79.433861
 Laurinburg Pop: 25,706 Scotland County Pop: 37,601

Regional Data Summary Report

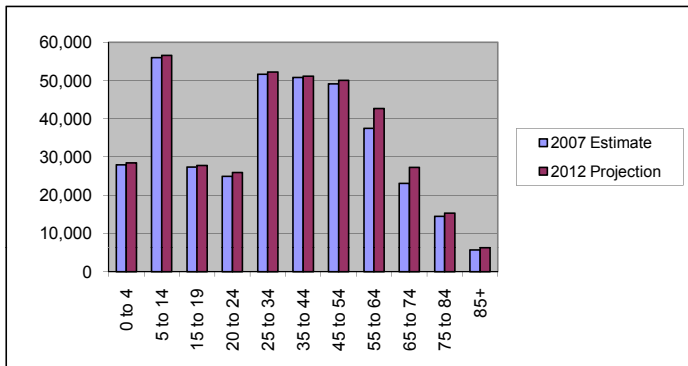
Population & Households

	2007 Estimate	2012 Projection	Percent Change 2007 to 2012
Total Population	368,511	383,670	4.1%
Population Density (Pop/Sq Mi)	130.3	135.7	4.1%
Total Households	135,049	141,421	4.7%
Population by Gender:			
Male	180,181	188,637	4.7%
Female	188,329	195,033	3.6%



Population by Age

	2007 Estimate	2012 Projection	Percent Change 2007 to 2012
0 to 4	27,930	28,493	2.0%
5 to 14	56,021	56,598	1.0%
15 to 19	27,378	27,772	1.4%
20 to 24	24,926	25,951	4.1%
25 to 34	51,663	52,240	1.1%
35 to 44	50,799	51,148	0.7%
45 to 54	49,108	50,018	1.9%
55 to 64	37,530	42,656	13.7%
65 to 74	23,067	27,256	18.2%
75 to 84	14,437	15,281	5.9%
85+	5,656	6,256	10.6%

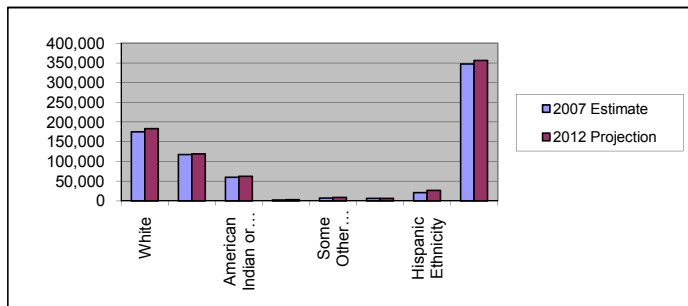


Median Age:

	2007 Estimate	2012 Projection	Percent Change 2007 to 2012
Total Population	34.3	35.2	2.5%

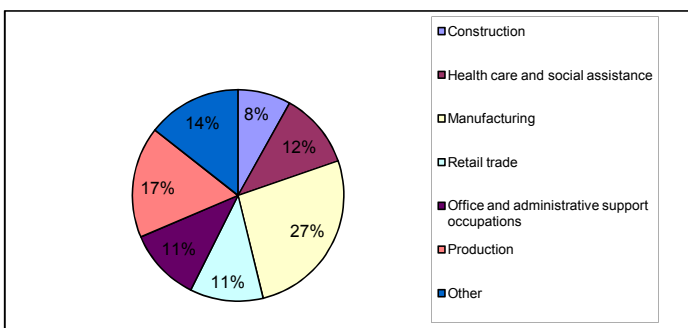
Population by Race/Ethnicity

	2007 Estimate	2012 Projection	Percent Change 2007 to 2012
White	174,997	183,409	4.8%
Black	117,505	119,220	1.5%
American Indian or Alaska Native	59,669	62,834	5.3%
Asian or Pacific Islander	2,766	3,059	10.6%
Some Other Race	7,130	8,912	25.0%
Two or More Races	6,444	6,233	-3.3%
Hispanic Ethnicity	21,489	27,083	26.0%
Not Hispanic or Latino	347,022	356,586	2.8%



Employment by Industry

	2000 US Census
Construction	8.1%
Health care and social assistance	11.6%
Manufacturing	26.5%
Retail trade	11.2%
Office and administrative support occupations	11.2%
Production	17.0%
Other	14.4%





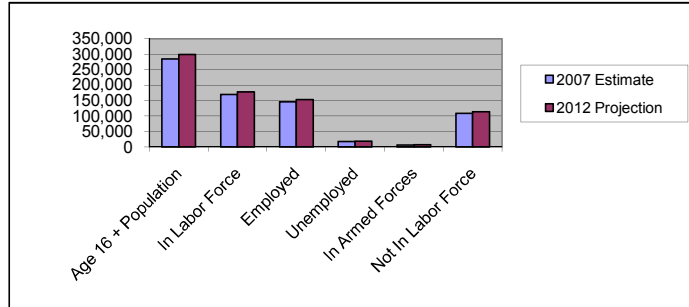
Dickerson Site (30 mile radius)
 US Highway 74 Laurinburg, NC 28352
 Lat: 34.762166 Long:-79.433861
 Laurinburg Pop: 25,706 Scotland County Pop: 37,601

Regional Data Summary Report

Labor Force

	2007 Estimate	2012 Projection	Percent Change 2007 to 2012
Age 16 + Population	284,913	299,717	5.2%
In Labor Force	169,975	178,590	5.1%
Employed	146,506	153,414	4.7%
Unemployed	17,512	18,371	4.9%
In Armed Forces	5,958	6,805	14.2%
Not In Labor Force	108,981	114,323	4.9%

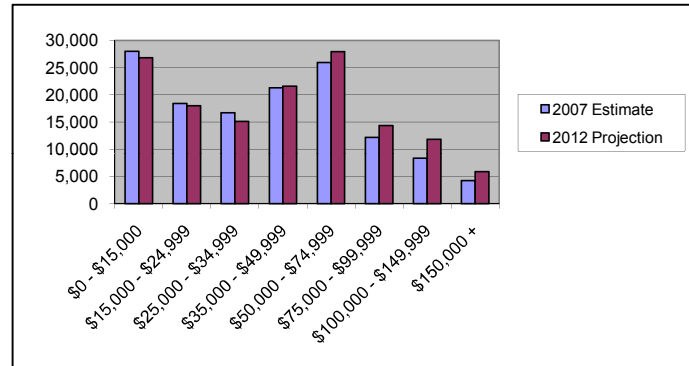
2007 Number of Employees (Daytime Population)	125,010
2007 Number of Employers	10,788



Households by Income

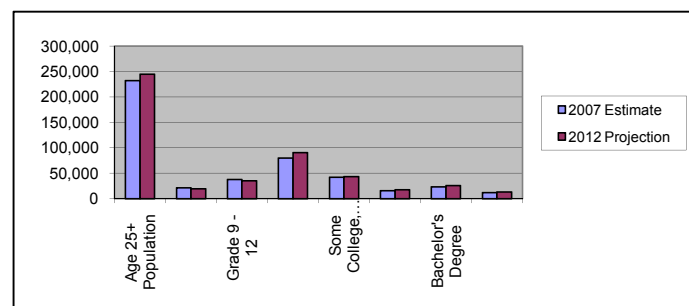
	2007 Estimate	2012 Projection	Percent Change 2007 to 2012
\$0 - \$15,000	27,978	26,794	-4.2%
\$15,000 - \$24,999	18,396	17,981	-2.3%
\$25,000 - \$34,999	16,728	15,104	-9.7%
\$35,000 - \$49,999	21,280	21,565	1.3%
\$50,000 - \$74,999	25,942	27,913	7.6%
\$75,000 - \$99,999	12,191	14,356	17.8%
\$100,000 - \$149,999	8,325	11,816	41.9%
\$150,000 +	4,209	5,893	40.0%

Average Hhld Income	\$43,653	\$45,597	4.5%
Median Hhld Income	\$37,933	\$42,180	11.2%
Per Capita Income	\$16,764	\$17,671	5.4%



Level of Educational Attainment

	2007 Estimate	2012 Projection	Percent Change 2007 to 2012
Age 25+ Population	232,259	244,854	5.4%
Grade K - 8	21,552	19,662	-8.8%
Grade 9 - 12	37,561	35,351	-5.9%
High School Graduate	79,824	90,512	13.4%
Some College, No Degree	42,376	43,091	1.7%
Associates Degree	15,887	17,787	12.0%
Bachelor's Degree	23,321	25,540	9.5%
Graduate Degree	11,738	12,913	10.0%



Current year data is for the year 2007. 5 year projected data is for the year 2012. More About Our Data.
 Demographic data © 2007 by Experian/Applied Geographic Solutions.

© 2007. DemographicsNow is brought to you by SRC, LLC.
 SRC, DemographicsNow.com and the SRC and DemographicsNow.com logos are trademarks of SRC, LLC. All rights reserved.