



Laurinburg/Scotland County Mega Site (30 mile radius)

13501 Airbase Road Maxton, NC 28340

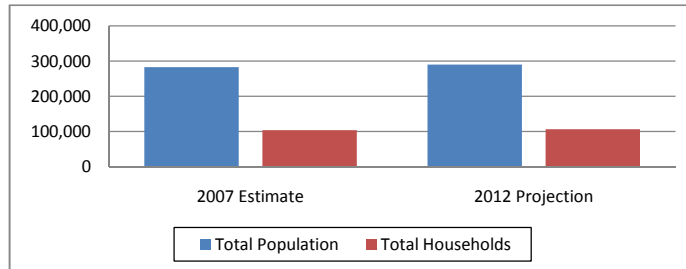
Lat: 34.464058 Long:-79.205892

Maxton Pop: 11,836 Robeson County Pop: 129,627

Regional Data Summary Report

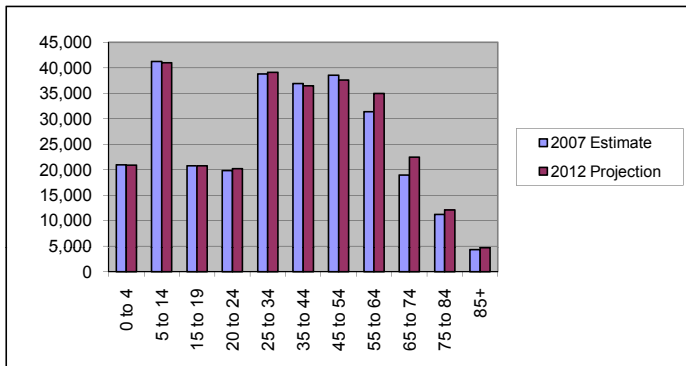
Population & Households

	2007 Estimate	2012 Projection	Percent Change 2007 to 2012
Total Population	282,892	290,366	2.6%
Population Density (Pop/Sq Mi)	100.1	102.7	2.6%
Total Households	103,913	106,590	2.6%
Population by Gender:			
Male	136,569	141,108	3.3%
Female	146,323	149,258	2.0%



Population by Age

	2007 Estimate	2012 Projection	Percent Change 2007 to 2012
0 to 4	20,949	20,904	-0.2%
5 to 14	41,264	40,963	-0.7%
15 to 19	20,744	20,802	0.3%
20 to 24	19,839	20,216	1.9%
25 to 34	38,809	39,127	0.8%
35 to 44	36,894	36,489	-1.1%
45 to 54	38,530	37,608	-2.4%
55 to 64	31,352	34,928	11.4%
65 to 74	18,953	22,496	18.7%
75 to 84	11,230	12,141	8.1%
85+	4,331	4,694	8.4%

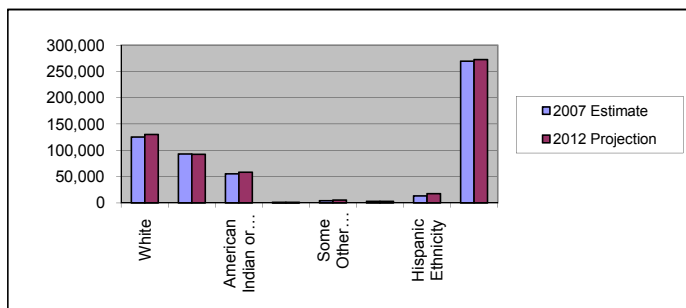


Median Age:

	2007 Estimate	2012 Projection	Percent Change 2007 to 2012
Total Population	35.0	35.8	2.5%

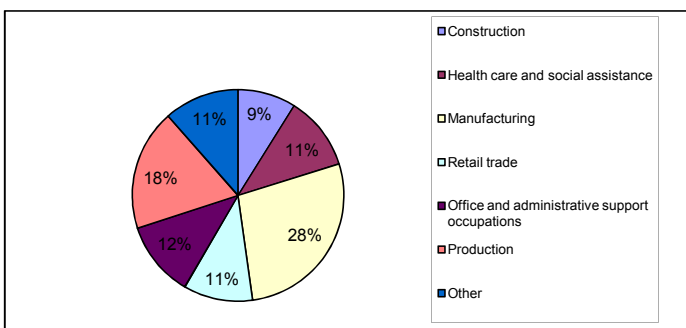
Population by Race/Ethnicity

	2007 Estimate	2012 Projection	Percent Change 2007 to 2012
White	125,554	130,320	3.8%
Black	93,039	92,253	-0.8%
American Indian or Alaska Native	55,554	58,177	4.7%
Asian or Pacific Islander	1,234	1,430	15.9%
Some Other Race	4,236	5,285	24.8%
Two or More Races	3,276	2,898	-11.5%
Hispanic Ethnicity	13,622	17,466	28.2%
Not Hispanic or Latino	269,271	272,900	1.3%



Employment by Industry

	2000 US Census
Construction	8.9%
Health care and social assistance	11.3%
Manufacturing	27.6%
Retail trade	10.6%
Office and administrative support occupations	11.6%
Production	18.5%
Other	11.5%





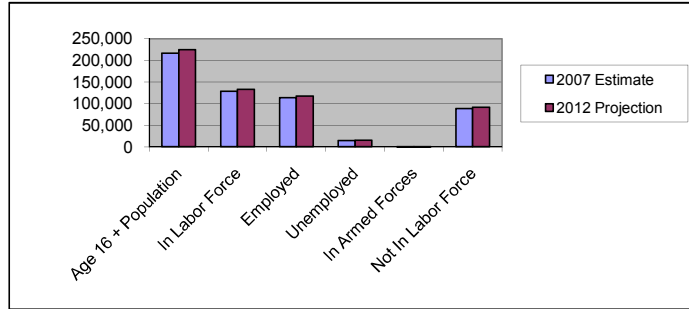
Laurinburg/Scotland County Mega Site (30 mile radius)
 13501 Airbase Road Maxton, NC 28340
 Lat: 34.464058 Long:-79.205892
 Maxton Pop: 11,836 Robeson County Pop: 129,627

Regional Data Summary Report

Labor Force

	2007 Estimate	2012 Projection	Percent Change 2007 to 2012
Age 16 + Population	216,811	224,650	3.6%
In Labor Force	128,088	132,634	3.6%
Employed	113,373	117,365	3.5%
Unemployed	14,469	15,002	3.7%
In Armed Forces	246	268	8.9%
Not In Labor Force	88,478	91,749	3.7%

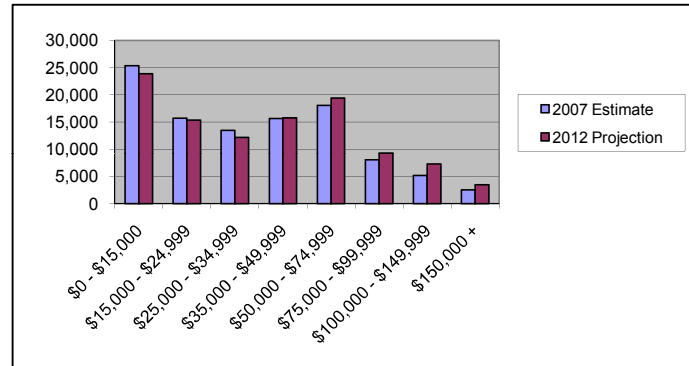
2007 Number of Employees (Daytime Population)	95,571
2007 Number of Employers	8,300



Households by Income

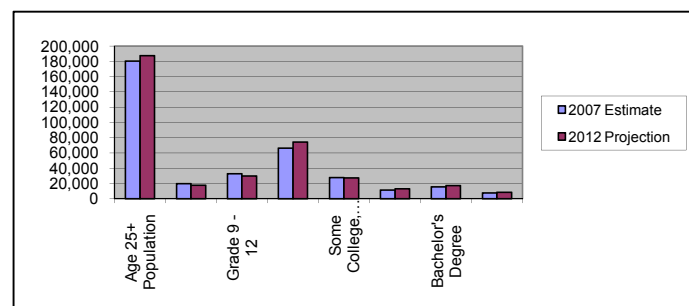
	2007 Estimate	2012 Projection	Percent Change 2007 to 2012
\$0 - \$15,000	25,324	23,856	-5.8%
\$15,000 - \$24,999	15,707	15,354	-2.2%
\$25,000 - \$34,999	13,464	12,149	-9.8%
\$35,000 - \$49,999	15,627	15,738	0.7%
\$50,000 - \$74,999	18,055	19,422	7.6%
\$75,000 - \$99,999	8,047	9,296	15.5%
\$100,000 - \$149,999	5,180	7,309	41.1%
\$150,000 +	2,508	3,465	38.1%

Average Hhld Income	\$39,200	\$40,985	4.6%
Median Hhld Income	\$32,855	\$36,569	11.3%
Per Capita Income	\$15,024	\$15,772	5.0%



Level of Educational Attainment

	2007 Estimate	2012 Projection	Percent Change 2007 to 2012
Age 25+ Population	180,099	187,482	4.1%
Grade K - 8	19,717	17,649	-10.5%
Grade 9 - 12	32,556	29,860	-8.3%
High School Graduate	66,112	74,342	12.5%
Some College, No Degree	27,628	27,207	-1.5%
Associates Degree	11,266	13,003	15.4%
Bachelor's Degree	15,365	17,175	11.8%
Graduate Degree	7,455	8,246	10.6%



Current year data is for the year 2007. 5 year projected data is for the year 2012. More About Our Data.
 Demographic data © 2007 by Experian/Applied Geographic Solutions.

© 2007. DemographicsNow is brought to you by SRC, LLC.

SRC, DemographicsNow.com and the SRC and DemographicsNow.com logos are trademarks of SRC, LLC. All rights reserved.