

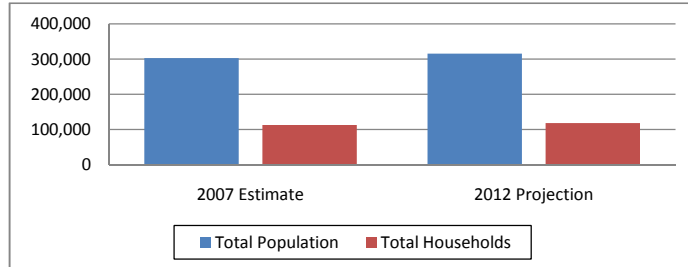


Morgan Site 1 (30 mile radius)
 Armstrong Road Laurel Hill, NC 28351
 Lat: 34.803027 Long:-79.527000
 Laurel Hill Pop: 5,962 Scotland County Pop: 37,601

Regional Data Summary Report

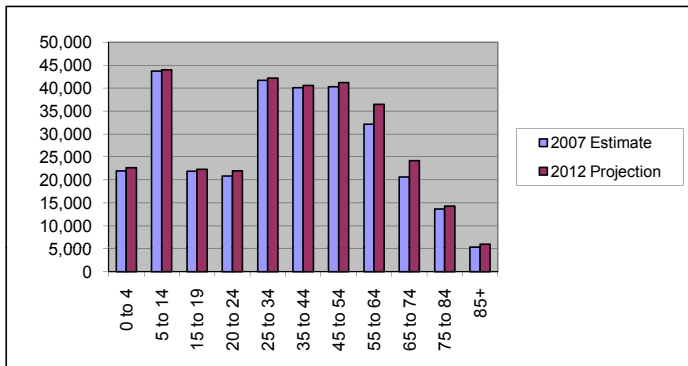
Population & Households

	2007 Estimate	2012 Projection	Percent Change 2007 to 2012
Total Population	302,354	315,904	4.5%
Population Density (Pop/Sq Mi)	106.9	111.7	4.5%
Total Households	112,440	117,887	4.8%
Population by Gender:			
Male	148,141	155,873	5.2%
Female	154,214	160,031	3.8%



Population by Age

	2007 Estimate	2012 Projection	Percent Change 2007 to 2012
0 to 4	21,983	22,634	3.0%
5 to 14	43,707	44,017	0.7%
15 to 19	21,866	22,336	2.1%
20 to 24	20,877	21,994	5.4%
25 to 34	41,717	42,183	1.1%
35 to 44	40,117	40,579	1.2%
45 to 54	40,309	41,197	2.2%
55 to 64	32,121	36,469	13.5%
65 to 74	20,619	24,231	17.5%
75 to 84	13,643	14,294	4.8%
85+	5,396	5,965	10.5%

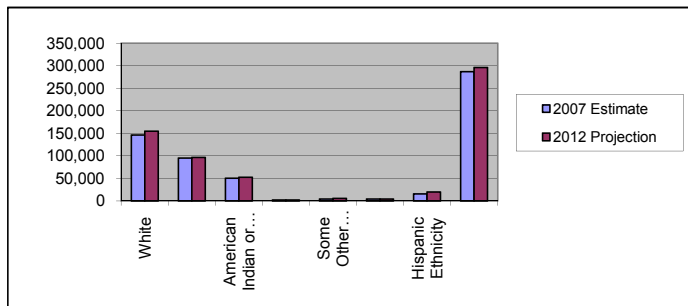


Median Age:

	2007 Estimate	2012 Projection	Percent Change 2007 to 2012
Total Population	35.3	36.1	2.5%

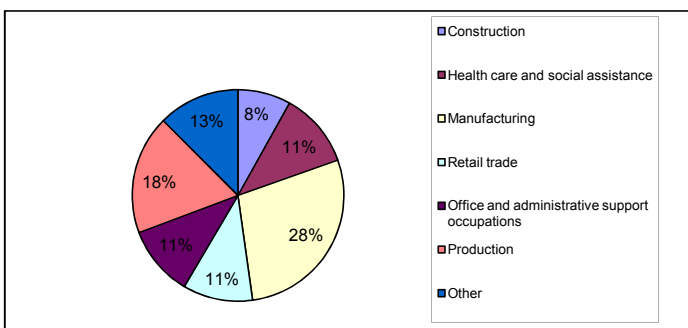
Population by Race/Ethnicity

	2007 Estimate	2012 Projection	Percent Change 2007 to 2012
White	146,476	154,646	5.6%
Black	95,080	96,730	1.7%
American Indian or Alaska Native	50,133	52,771	5.3%
Asian or Pacific Islander	1,855	2,093	12.9%
Some Other Race	4,491	5,675	26.4%
Two or More Races	4,319	3,987	-7.7%
Hispanic Ethnicity	15,391	19,879	29.2%
Not Hispanic or Latino	286,963	296,025	3.2%



Employment by Industry

	2000 US Census
Construction	8.1%
Health care and social assistance	11.5%
Manufacturing	28.2%
Retail trade	10.7%
Office and administrative support occupations	10.8%
Production	18.2%
Other	12.5%





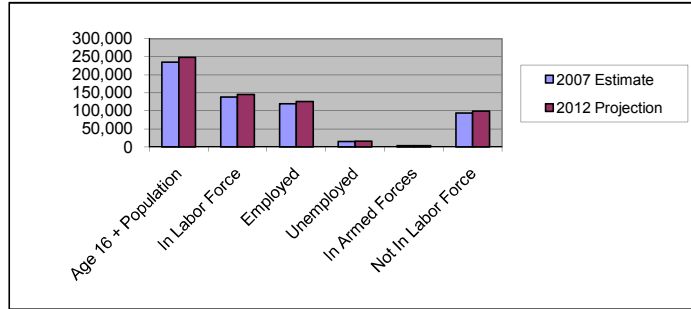
Morgan Site 1 (30 mile radius)
 Armstrong Road Laurel Hill, NC 28351
 Lat: 34.803027 Long:-79.527000
 Laurel Hill Pop: 5,962 Scotland County Pop: 37,601

Regional Data Summary Report

Labor Force

	2007 Estimate	2012 Projection	Percent Change 2007 to 2012
Age 16 + Population	235,489	248,448	5.5%
In Labor Force	138,393	145,814	5.4%
Employed	120,111	126,317	5.2%
Unemployed	15,157	15,918	5.0%
In Armed Forces	3,125	3,579	14.5%
Not In Labor Force	93,971	99,054	5.4%

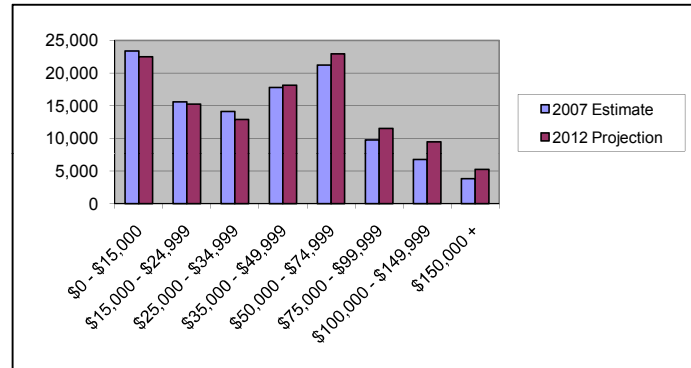
2007 Number of Employees (Daytime Population)	113,140
2007 Number of Employers	9,103



Households by Income

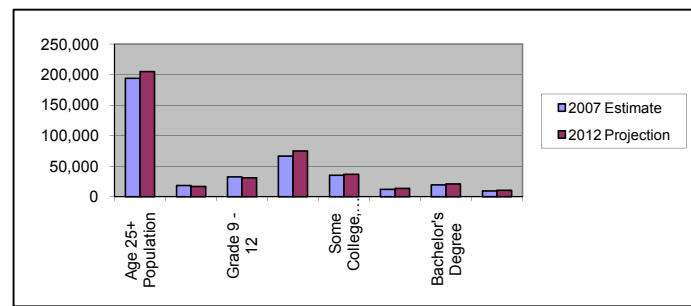
	2007 Estimate	2012 Projection	Percent Change 2007 to 2012
\$0 - \$15,000	23,363	22,500	-3.7%
\$15,000 - \$24,999	15,594	15,256	-2.2%
\$25,000 - \$34,999	14,116	12,887	-8.7%
\$35,000 - \$49,999	17,816	18,116	1.7%
\$50,000 - \$74,999	21,230	22,955	8.1%
\$75,000 - \$99,999	9,743	11,505	18.1%
\$100,000 - \$149,999	6,762	9,445	39.7%
\$150,000 +	3,816	5,224	36.9%

Average Hhld Income	\$43,681	\$45,529	4.2%
Median Hhld Income	\$37,470	\$41,491	10.7%
Per Capita Income	\$17,027	\$17,878	5.0%



Level of Educational Attainment

	2007 Estimate	2012 Projection	Percent Change 2007 to 2012
Age 25+ Population	193,922	204,918	5.7%
Grade K - 8	18,307	16,866	-7.9%
Grade 9 - 12	32,498	31,130	-4.2%
High School Graduate	66,778	75,135	12.5%
Some College, No Degree	34,926	36,711	5.1%
Associates Degree	12,280	13,659	11.2%
Bachelor's Degree	19,522	21,112	8.1%
Graduate Degree	9,611	10,306	7.2%



Current year data is for the year 2007. 5 year projected data is for the year 2012. More About Our Data.
 Demographic data © 2007 by Experian/Applied Geographic Solutions.