



Z. V. Pate Site (30 mile radius)

US Highway 15 & 401 Laurinburg, NC 28352

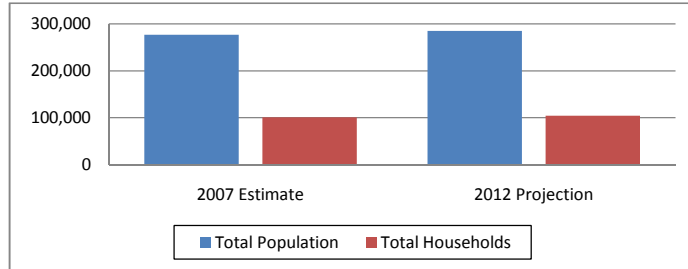
Lat: 34.798638 Long:-79.761055

Laurinburg Pop: 25,706 Scotland County Pop: 37,601

Regional Data Summary Report

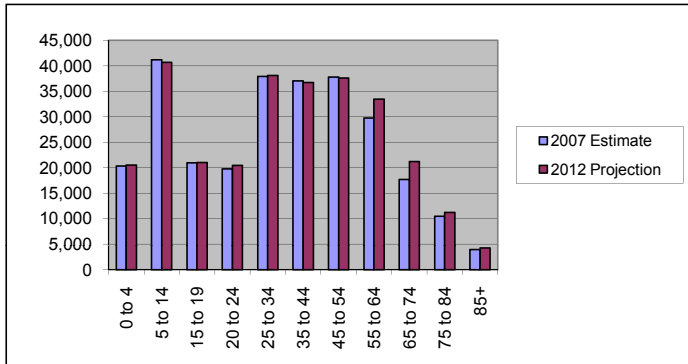
Population & Households

	2007 Estimate	2012 Projection	Percent Change 2007 to 2012
Total Population	276,869	285,290	3.0%
Population Density (Pop/Sq Mi)	97.9	100.9	3.0%
Total Households	101,026	104,594	3.5%
Population by Gender:			
Male	135,819	141,000	3.8%
Female	141,051	144,289	2.3%



Population by Age

	2007 Estimate	2012 Projection	Percent Change 2007 to 2012
0 to 4	20,360	20,511	0.7%
5 to 14	41,158	40,643	-1.3%
15 to 19	20,981	21,037	0.3%
20 to 24	19,749	20,429	3.4%
25 to 34	37,900	38,104	0.5%
35 to 44	37,044	36,744	-0.8%
45 to 54	37,754	37,601	-0.4%
55 to 64	29,780	33,467	12.4%
65 to 74	17,710	21,235	19.9%
75 to 84	10,498	11,241	7.1%
85+	3,939	4,276	8.6%

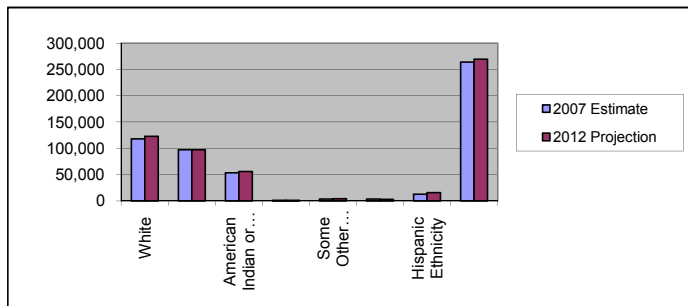


Median Age:

	2007 Estimate	2012 Projection	Percent Change 2007 to 2012
Total Population	34.5	35.5	2.8%

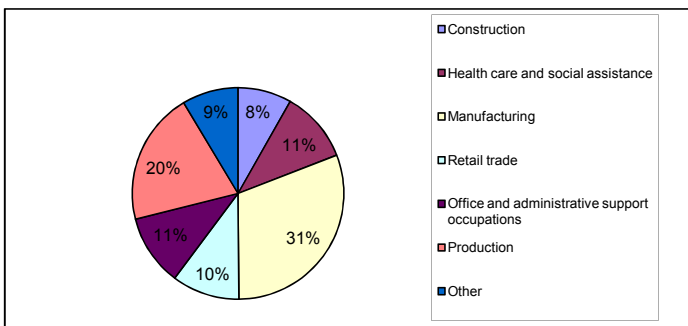
Population by Race/Ethnicity

	2007 Estimate	2012 Projection	Percent Change 2007 to 2012
White	117,877	122,858	4.2%
Black	97,399	97,664	0.3%
American Indian or Alaska Native	53,246	55,931	5.0%
Asian or Pacific Islander	1,317	1,472	11.8%
Some Other Race	3,507	4,405	25.6%
Two or More Races	3,524	2,958	-16.1%
Hispanic Ethnicity	12,500	15,911	27.3%
Not Hispanic or Latino	264,369	269,378	1.9%



Employment by Industry

	2000 US Census
Construction	8.2%
Health care and social assistance	10.9%
Manufacturing	30.8%
Retail trade	10.3%
Office and administrative support occupations	10.9%
Production	20.3%
Other	8.6%





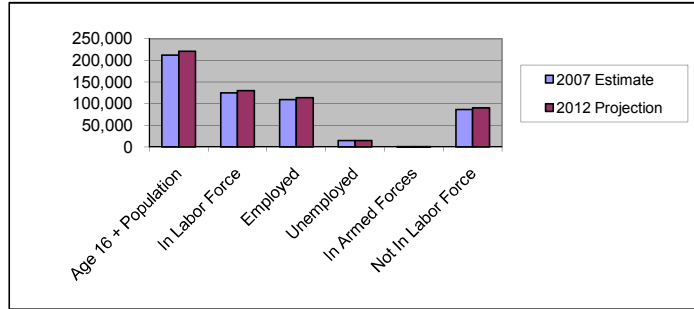
Z. V. Pate Site (30 mile radius)
 US Highway 15 & 401 Laurinburg, NC 28352
 Lat: 34.798638 Long:-79.761055
 Laurinburg Pop: 25,706 Scotland County Pop: 37,601

Regional Data Summary Report

Labor Force

	2007 Estimate	2012 Projection	Percent Change 2007 to 2012
Age 16 + Population	212,178	221,064	4.2%
In Labor Force	125,015	130,062	4.0%
Employed	109,493	113,848	4.0%
Unemployed	14,535	15,123	4.0%
In Armed Forces	987	1,091	10.6%
Not In Labor Force	86,176	89,911	4.3%

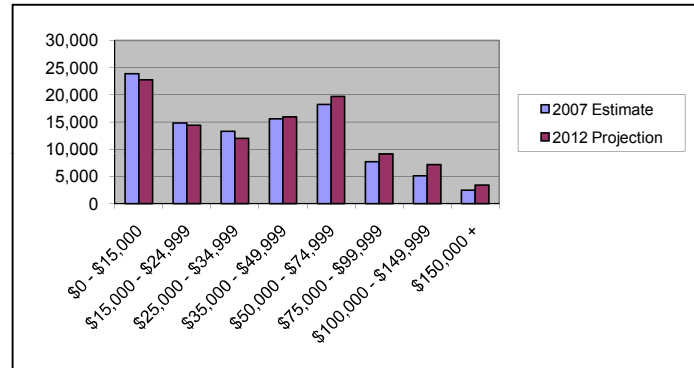
2007 Number of Employees (Daytime Population)	92,437
2007 Number of Employers	7,537



Households by Income

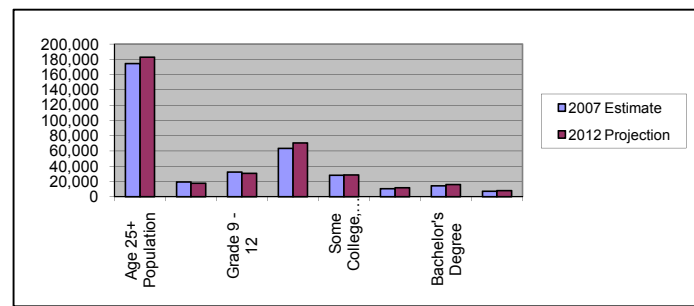
	2007 Estimate	2012 Projection	Percent Change 2007 to 2012
\$0 - \$15,000	23,887	22,754	-4.7%
\$15,000 - \$24,999	14,815	14,440	-2.5%
\$25,000 - \$34,999	13,278	12,019	-9.5%
\$35,000 - \$49,999	15,587	15,956	2.4%
\$50,000 - \$74,999	18,209	19,710	8.2%
\$75,000 - \$99,999	7,705	9,128	18.5%
\$100,000 - \$149,999	5,103	7,198	41.0%
\$150,000 +	2,442	3,390	38.8%

Average Hhld Income	\$39,186	\$40,892	4.4%
Median Hhld Income	\$33,750	\$37,487	11.1%
Per Capita Income	\$15,053	\$15,873	5.4%



Level of Educational Attainment

	2007 Estimate	2012 Projection	Percent Change 2007 to 2012
Age 25+ Population	174,625	182,669	4.6%
Grade K - 8	19,157	17,485	-8.7%
Grade 9 - 12	32,445	30,488	-6.0%
High School Graduate	63,206	70,622	11.7%
Some College, No Degree	28,019	28,412	1.4%
Associates Degree	10,497	11,857	13.0%
Bachelor's Degree	14,324	16,040	12.0%
Graduate Degree	6,978	7,765	11.3%



Current year data is for the year 2007. 5 year projected data is for the year 2012. More About Our Data.
 Demographic data © 2007 by Experian/Applied Geographic Solutions.

© 2007. DemographicsNow is brought to you by SRC, LLC.

SRC, DemographicsNow.com and the SRC and DemographicsNow.com logos are trademarks of SRC, LLC. All rights reserved.