

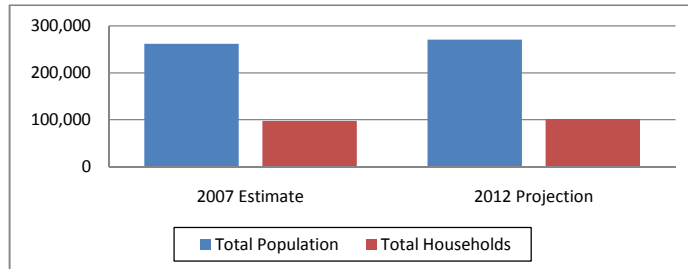


Minot Building (30 mile radius)
 13780 Fletcher Street Gibson, NC 28343
 Lat: 34.763638 Long: -79.608888
 Gibson Pop: 596 Scotland County Pop: 37,601

Regional Data Summary Report

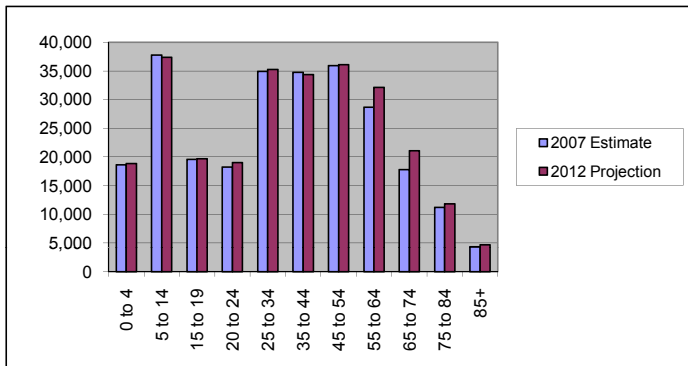
Population & Households

	2007 Estimate	2012 Projection	Percent Change 2007 to 2012
Total Population	261,917	270,405	3.2%
Population Density (Pop/Sq Mi)	92.6	95.6	3.2%
Total Households	97,603	101,450	3.9%
Population by Gender:			
Male	128,096	133,271	4.0%
Female	133,821	137,134	2.5%



Population by Age

	2007 Estimate	2012 Projection	Percent Change 2007 to 2012
0 to 4	18,615	18,882	1.4%
5 to 14	37,789	37,359	-1.1%
15 to 19	19,609	19,690	0.4%
20 to 24	18,248	19,045	4.4%
25 to 34	34,929	35,283	1.0%
35 to 44	34,753	34,349	-1.2%
45 to 54	35,932	36,076	0.4%
55 to 64	28,702	32,151	12.0%
65 to 74	17,795	21,092	18.5%
75 to 84	11,219	11,809	5.3%
85+	4,325	4,661	7.8%

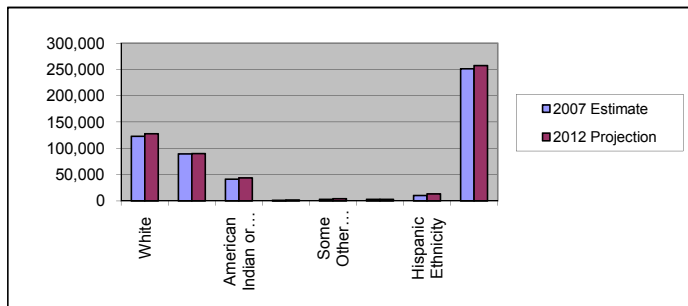


Median Age:

	2007 Estimate	2012 Projection	Percent Change 2007 to 2012
Total Population	35.5	36.4	2.5%

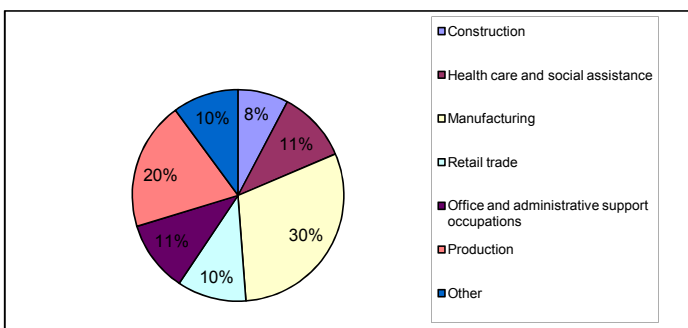
Population by Race/Ethnicity

	2007 Estimate	2012 Projection	Percent Change 2007 to 2012
White	122,834	127,924	4.1%
Black	89,557	90,290	0.8%
American Indian or Alaska Native	41,666	43,660	4.8%
Asian or Pacific Islander	1,373	1,528	11.3%
Some Other Race	3,216	4,173	29.8%
Two or More Races	3,269	2,825	-13.6%
Hispanic Ethnicity	10,424	13,244	27.1%
Not Hispanic or Latino	251,492	257,160	2.3%



Employment by Industry

	2000 US Census
Construction	7.7%
Health care and social assistance	10.9%
Manufacturing	30.2%
Retail trade	10.6%
Office and administrative support occupations	10.9%
Production	19.6%
Other	10.1%





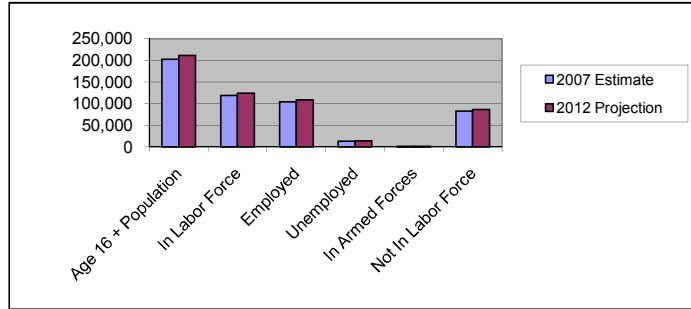
Minot Building (30 mile radius)
 13780 Fletcher Street Gibson, NC 28343
 Lat: 34.763638 Long: -79.608888
 Gibson Pop: 596 Scotland County Pop: 37,601

Regional Data Summary Report

Labor Force

	2007 Estimate	2012 Projection	Percent Change 2007 to 2012
Age 16 + Population	202,822	211,611	4.3%
In Labor Force	118,936	123,997	4.3%
Employed	104,104	108,461	4.2%
Unemployed	13,672	14,240	4.2%
In Armed Forces	1,160	1,297	11.7%
Not In Labor Force	82,725	86,317	4.3%

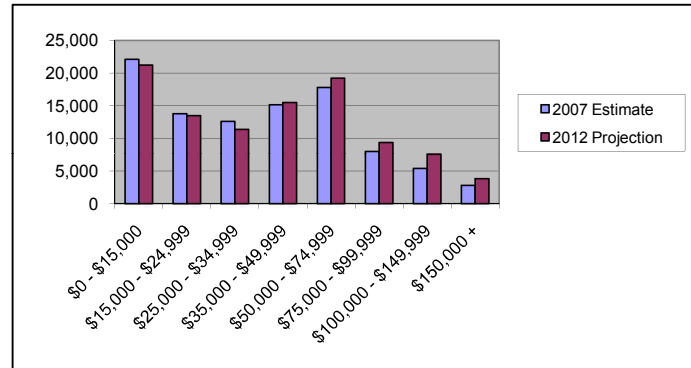
2007 Number of Employees (Daytime Population)	88,903
2007 Number of Employers	7,771



Households by Income

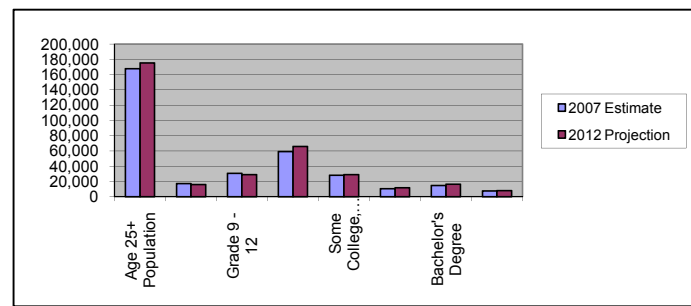
	2007 Estimate	2012 Projection	Percent Change 2007 to 2012
\$0 - \$15,000	22,101	21,207	-4.0%
\$15,000 - \$24,999	13,794	13,468	-2.4%
\$25,000 - \$34,999	12,605	11,358	-9.9%
\$35,000 - \$49,999	15,125	15,469	2.3%
\$50,000 - \$74,999	17,798	19,204	7.9%
\$75,000 - \$99,999	8,014	9,359	16.8%
\$100,000 - \$149,999	5,376	7,554	40.5%
\$150,000 +	2,791	3,831	37.3%

Average Hhld Income	\$41,483	\$43,184	4.1%
Median Hhld Income	\$35,268	\$38,961	10.5%
Per Capita Income	\$16,282	\$17,157	5.4%



Level of Educational Attainment

	2007 Estimate	2012 Projection	Percent Change 2007 to 2012
Age 25+ Population	167,656	175,420	4.6%
Grade K - 8	17,208	15,837	-8.0%
Grade 9 - 12	30,401	29,019	-4.5%
High School Graduate	59,294	65,633	10.7%
Some College, No Degree	28,095	29,131	3.7%
Associates Degree	10,418	11,556	10.9%
Bachelor's Degree	14,858	16,240	9.3%
Graduate Degree	7,382	8,005	8.4%



Current year data is for the year 2007. 5 year projected data is for the year 2012. More About Our Data.
 Demographic data © 2007 by Experian/Applied Geographic Solutions.