

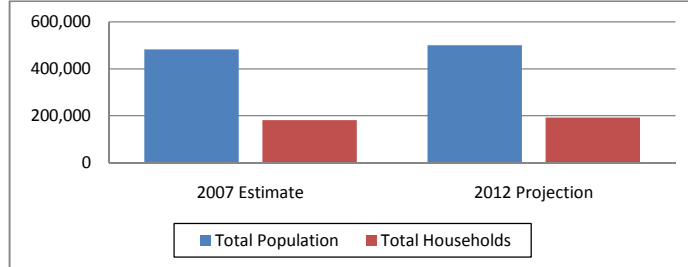


Scotland County Spec Building (30 mile radius)  
 16780 Airport Road Laurinburg, NC 28352  
 Lat: 34.798750 Long:-79.367670  
 Laurinburg Pop: 25,706 Scotland County Pop: 37,601

## Regional Data Summary Report

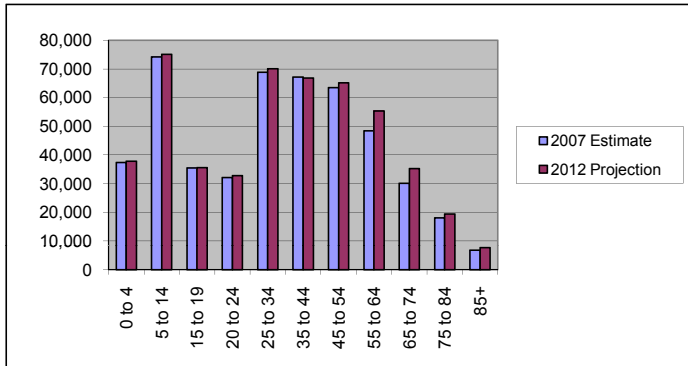
### Population & Households

	2007 Estimate	2012 Projection	Percent Change 2007 to 2012
Total Population	482,192	500,887	3.9%
Population Density (Pop/Sq Mi)	170.5	177.2	3.9%
Total Households	181,795	191,907	5.6%
<b>Population by Gender:</b>			
Male	234,921	244,512	4.1%
Female	247,271	256,376	3.7%



### Population by Age

	2007 Estimate	2012 Projection	Percent Change 2007 to 2012
0 to 4	37,381	37,789	1.1%
5 to 14	74,151	75,039	1.2%
15 to 19	35,490	35,625	0.4%
20 to 24	32,180	32,788	1.9%
25 to 34	68,796	70,096	1.9%
35 to 44	67,197	66,813	-0.6%
45 to 54	63,534	65,128	2.5%
55 to 64	48,444	55,298	14.1%
65 to 74	30,121	35,255	17.0%
75 to 84	18,087	19,360	7.0%
85+	6,818	7,701	12.9%

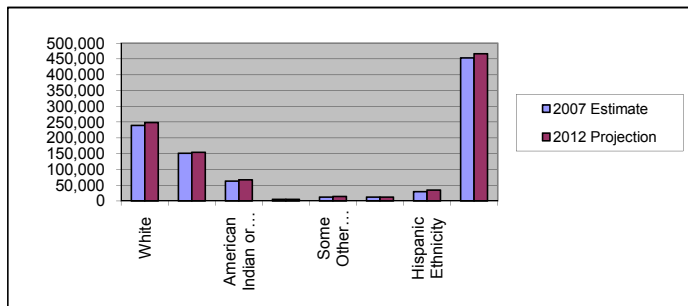


#### Median Age:

	2007 Estimate	2012 Projection	Percent Change 2007 to 2012
Total Population	34.0	34.9	2.6%

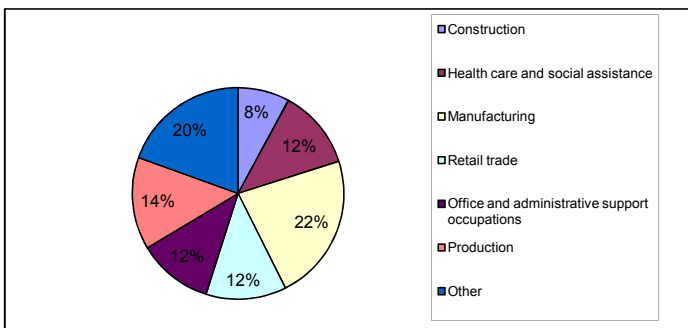
### Population by Race/Ethnicity

	2007 Estimate	2012 Projection	Percent Change 2007 to 2012
White	239,153	248,158	3.8%
Black	151,066	154,235	2.1%
American Indian or Alaska Native	63,151	66,566	5.4%
Asian or Pacific Islander	5,224	5,334	2.1%
Some Other Race	11,932	14,541	21.9%
Two or More Races	11,665	12,050	3.3%
Hispanic Ethnicity	28,942	34,453	19.0%
Not Hispanic or Latino	453,249	466,435	2.9%



### Employment by Industry

	2000 US Census
Construction	7.9%
Health care and social assistance	12.2%
Manufacturing	22.5%
Retail trade	12.3%
Office and administrative support occupations	11.5%
Production	14.1%
Other	19.5%





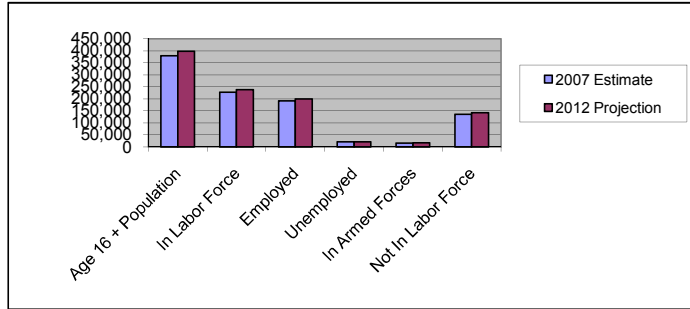
Scotland County Spec Building (30 mile radius)  
 16780 Airport Road Laurinburg, NC 28352  
 Lat: 34.798750 Long:-79.367670  
 Laurinburg Pop: 25,706 Scotland County Pop: 37,601

## Regional Data Summary Report

### Labor Force

	2007 Estimate	2012 Projection	Percent Change 2007 to 2012
Age 16 + Population	379,075	398,115	5.0%
In Labor Force	227,840	238,461	4.7%
Employed	191,235	199,215	4.2%
Unemployed	20,811	21,803	4.8%
In Armed Forces	15,794	17,442	10.4%
Not In Labor Force	135,441	142,211	5.0%

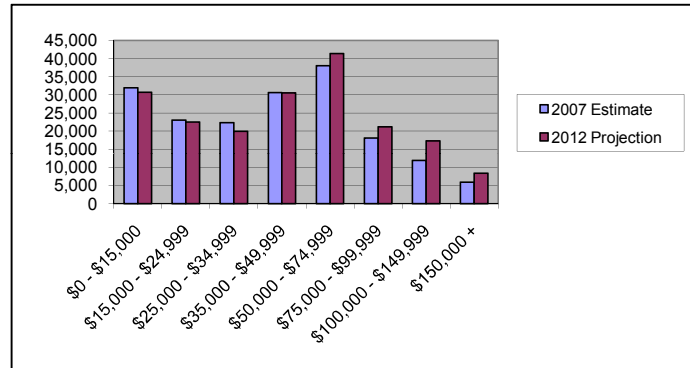
2007 Number of Employees (Daytime Population)	171,337
2007 Number of Employers	14,095



### Households by Income

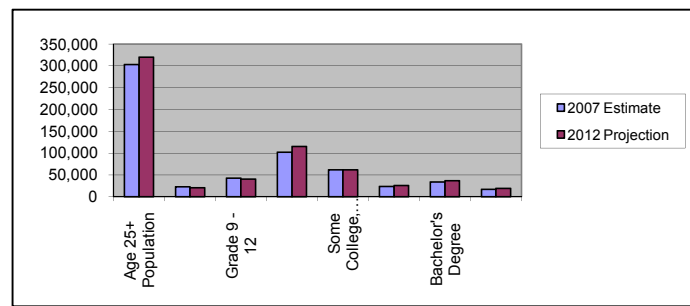
	2007 Estimate	2012 Projection	Percent Change 2007 to 2012
\$0 - \$15,000	31,949	30,674	-4.0%
\$15,000 - \$24,999	23,025	22,504	-2.3%
\$25,000 - \$34,999	22,350	19,929	-10.8%
\$35,000 - \$49,999	30,577	30,494	-0.3%
\$50,000 - \$74,999	37,986	41,413	9.0%
\$75,000 - \$99,999	18,050	21,215	17.5%
\$100,000 - \$149,999	11,912	17,264	44.9%
\$150,000 +	5,945	8,413	41.5%

Average Hhld Income	\$46,145	\$48,177	4.4%
Median Hhld Income	\$41,472	\$46,286	11.6%
Per Capita Income	\$18,076	\$19,215	6.3%



### Level of Educational Attainment

	2007 Estimate	2012 Projection	Percent Change 2007 to 2012
Age 25+ Population	302,997	319,651	5.5%
Grade K - 8	22,956	20,812	-9.3%
Grade 9 - 12	42,705	40,149	-6.0%
High School Graduate	101,637	115,408	13.6%
Some College, No Degree	61,578	61,854	0.4%
Associates Degree	23,427	25,819	10.2%
Bachelor's Degree	33,751	36,742	8.9%
Graduate Degree	16,943	18,866	11.4%



Current year data is for the year 2007. 5 year projected data is for the year 2012. More About Our Data.  
 Demographic data © 2007 by Experian/Applied Geographic Solutions.

© 2007. DemographicsNow is brought to you by SRC, LLC.

SRC, DemographicsNow.com and the SRC and DemographicsNow.com logos are trademarks of SRC, LLC. All rights reserved.