

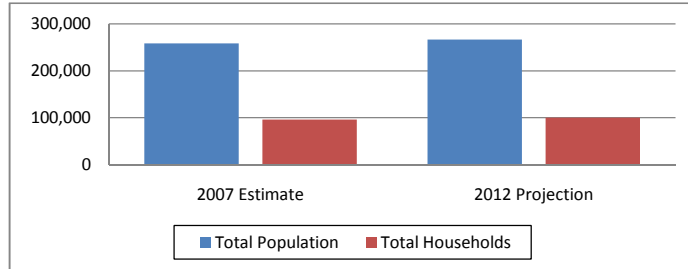


Scotland Wood Products Building (30 mile radius)
 5500 Laurence Street Gibson, NC 28343
 Lat: 34.754000 Long:-79.611138
 Gibson Pop: 596 Scotland County Pop: 37,601

Regional Data Summary Report

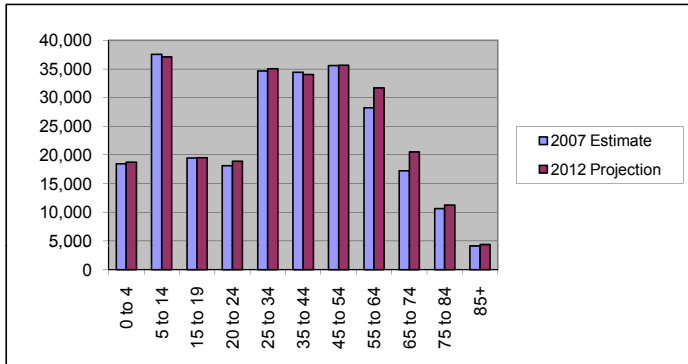
Population & Households

| | 2007 Estimate | 2012 Projection | Percent Change 2007 to 2012 |
|--------------------------------|---------------|-----------------|-----------------------------|
| Total Population | 258,513 | 266,864 | 3.2% |
| Population Density (Pop/Sq Mi) | 91.4 | 94.4 | 3.2% |
| Total Households | 96,127 | 99,936 | 4.0% |
| Population by Gender: | | | |
| Male | 126,443 | 131,536 | 4.0% |
| Female | 132,070 | 135,328 | 2.5% |



Population by Age

| | 2007 Estimate | 2012 Projection | Percent Change 2007 to 2012 |
|----------|---------------|-----------------|-----------------------------|
| 0 to 4 | 18,465 | 18,724 | 1.4% |
| 5 to 14 | 37,555 | 37,104 | -1.2% |
| 15 to 19 | 19,481 | 19,546 | 0.3% |
| 20 to 24 | 18,104 | 18,885 | 4.3% |
| 25 to 34 | 34,663 | 35,030 | 1.1% |
| 35 to 44 | 34,442 | 34,020 | -1.2% |
| 45 to 54 | 35,568 | 35,642 | 0.2% |
| 55 to 64 | 28,250 | 31,662 | 12.1% |
| 65 to 74 | 17,225 | 20,538 | 19.2% |
| 75 to 84 | 10,656 | 11,288 | 5.9% |
| 85+ | 4,104 | 4,418 | 7.6% |

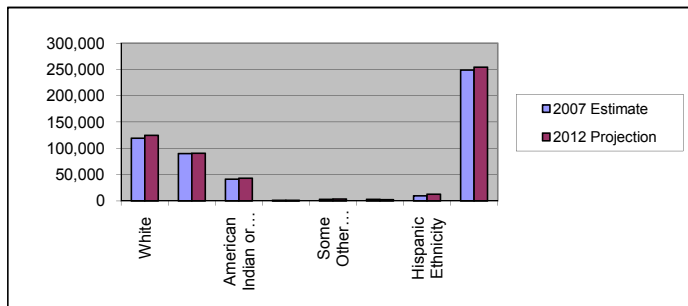


Median Age:

| | 2007 Estimate | 2012 Projection | Percent Change 2007 to 2012 |
|------------------|---------------|-----------------|-----------------------------|
| Total Population | 35.3 | 36.2 | 2.6% |

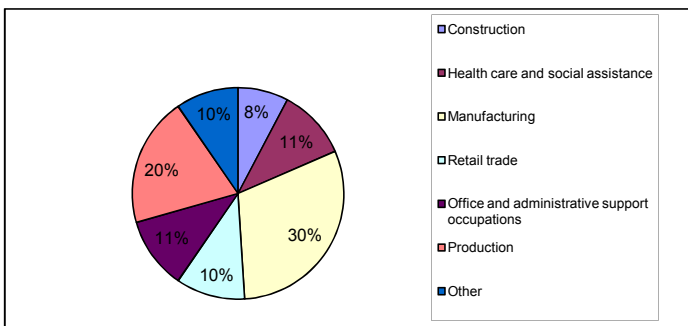
Population by Race/Ethnicity

| | 2007 Estimate | 2012 Projection | Percent Change 2007 to 2012 |
|----------------------------------|---------------|-----------------|-----------------------------|
| White | 119,430 | 124,455 | 4.2% |
| Black | 90,042 | 90,828 | 0.9% |
| American Indian or Alaska Native | 41,484 | 43,467 | 4.8% |
| Asian or Pacific Islander | 1,306 | 1,453 | 11.2% |
| Some Other Race | 3,047 | 3,937 | 29.2% |
| Two or More Races | 3,203 | 2,721 | -15.1% |
| Hispanic Ethnicity | 9,821 | 12,483 | 27.1% |
| Not Hispanic or Latino | 248,692 | 254,381 | 2.3% |



Employment by Industry

| | 2000 US Census |
|---|----------------|
| Construction | 7.7% |
| Health care and social assistance | 10.8% |
| Manufacturing | 30.5% |
| Retail trade | 10.6% |
| Office and administrative support occupations | 11.0% |
| Production | 19.8% |
| Other | 9.6% |





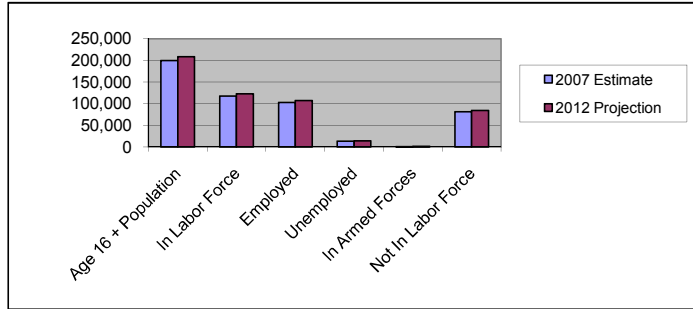
Scotland Wood Products Building (30 mile radius)
 5500 Laurence Street Gibson, NC 28343
 Lat: 34.754000 Long:-79.611138
 Gibson Pop: 596 Scotland County Pop: 37,601

Regional Data Summary Report

Labor Force

| | 2007 Estimate | 2012 Projection | Percent Change 2007 to 2012 |
|---------------------|---------------|-----------------|-----------------------------|
| Age 16 + Population | 199,741 | 208,410 | 4.3% |
| In Labor Force | 117,542 | 122,538 | 4.3% |
| Employed | 102,826 | 107,131 | 4.2% |
| Unemployed | 13,640 | 14,210 | 4.2% |
| In Armed Forces | 1,076 | 1,197 | 11.2% |
| Not In Labor Force | 81,123 | 84,675 | 4.4% |

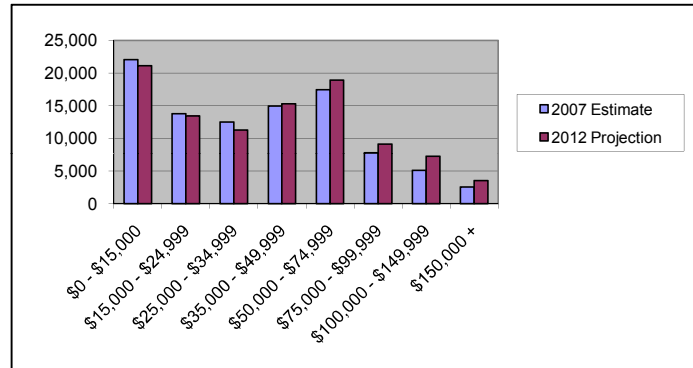
| | |
|---|--------|
| 2007 Number of Employees (Daytime Population) | 85,604 |
| 2007 Number of Employers | 7,484 |



Households by Income

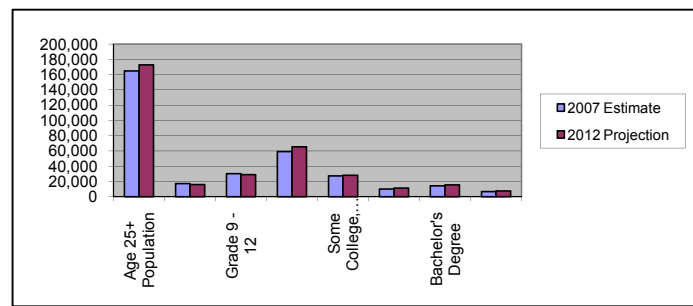
| | 2007 Estimate | 2012 Projection | Percent Change 2007 to 2012 |
|-----------------------|---------------|-----------------|-----------------------------|
| \$0 - \$15,000 | 22,049 | 21,145 | -4.1% |
| \$15,000 - \$24,999 | 13,751 | 13,435 | -2.3% |
| \$25,000 - \$34,999 | 12,479 | 11,268 | -9.7% |
| \$35,000 - \$49,999 | 14,962 | 15,289 | 2.2% |
| \$50,000 - \$74,999 | 17,469 | 18,927 | 8.3% |
| \$75,000 - \$99,999 | 7,774 | 9,108 | 17.2% |
| \$100,000 - \$149,999 | 5,095 | 7,247 | 42.2% |
| \$150,000 + | 2,549 | 3,517 | 38.0% |

| | | | |
|---------------------|----------|----------|-------|
| Average Hhld Income | \$40,625 | \$42,326 | 4.2% |
| Median Hhld Income | \$34,806 | \$38,505 | 10.6% |
| Per Capita Income | \$15,890 | \$16,766 | 5.5% |



Level of Educational Attainment

| | 2007 Estimate | 2012 Projection | Percent Change 2007 to 2012 |
|-------------------------|---------------|-----------------|-----------------------------|
| Age 25+ Population | 164,909 | 172,599 | 4.7% |
| Grade K - 8 | 17,264 | 15,871 | -8.1% |
| Grade 9 - 12 | 30,311 | 28,886 | -4.7% |
| High School Graduate | 58,942 | 65,218 | 10.6% |
| Some College, No Degree | 27,257 | 28,222 | 3.5% |
| Associates Degree | 10,152 | 11,300 | 11.3% |
| Bachelor's Degree | 14,076 | 15,531 | 10.3% |
| Graduate Degree | 6,907 | 7,570 | 9.6% |



Current year data is for the year 2007. 5 year projected data is for the year 2012. More About Our Data.
 Demographic data © 2007 by Experian/Applied Geographic Solutions.

© 2007. DemographicsNow is brought to you by SRC, LLC.

SRC, DemographicsNow.com and the SRC and DemographicsNow.com logos are trademarks of SRC, LLC. All rights reserved.