



Woodard Building (30 mile radius)

13761 Airport Road Laurinburg, NC 28352

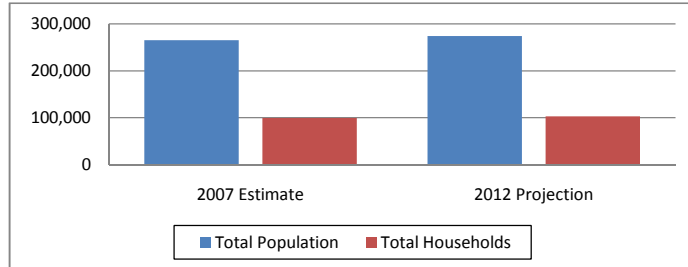
Lat: 34.774583 Long:-79.614166

Maxton Pop: 1,881 Scotland County Pop: 37,601

Regional Data Summary Report

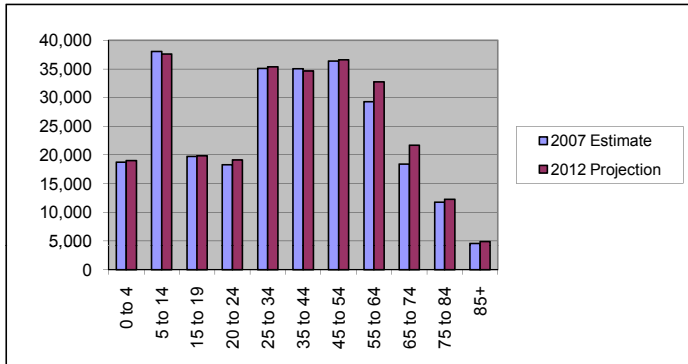
Population & Households

	2007 Estimate	2012 Projection	Percent Change 2007 to 2012
Total Population	265,311	273,925	3.2%
Population Density (Pop/Sq Mi)	93.8	96.9	3.2%
Total Households	99,347	103,252	3.9%
Population by Gender:			
Male	129,573	134,823	4.1%
Female	135,738	139,102	2.5%



Population by Age

	2007 Estimate	2012 Projection	Percent Change 2007 to 2012
0 to 4	18,725	19,004	1.5%
5 to 14	38,028	37,627	-1.1%
15 to 19	19,754	19,857	0.5%
20 to 24	18,311	19,120	4.4%
25 to 34	35,066	35,387	0.9%
35 to 44	35,050	34,634	-1.2%
45 to 54	36,370	36,575	0.6%
55 to 64	29,275	32,767	11.9%
65 to 74	18,400	21,716	18.0%
75 to 84	11,750	12,297	4.7%
85+	4,583	4,932	7.6%

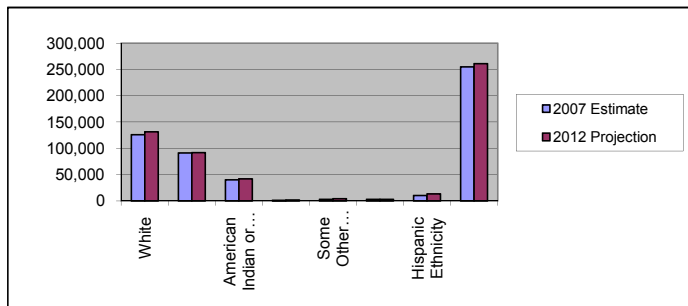


Median Age:

Total Population	35.8	36.7	2.5%
------------------	------	------	------

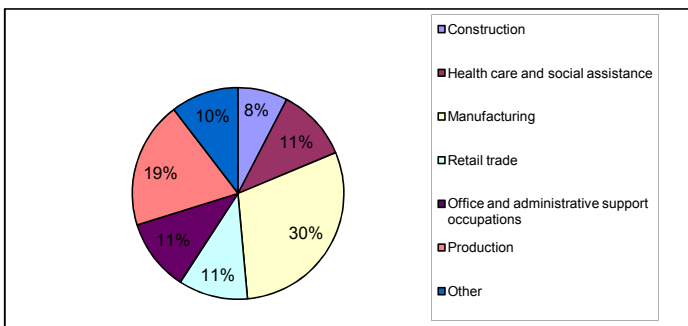
Population by Race/Ethnicity

	2007 Estimate	2012 Projection	Percent Change 2007 to 2012
White	126,006	131,210	4.1%
Black	91,064	91,786	0.8%
American Indian or Alaska Native	40,253	42,199	4.8%
Asian or Pacific Islander	1,442	1,605	11.3%
Some Other Race	3,253	4,252	30.7%
Two or More Races	3,293	2,870	-12.8%
Hispanic Ethnicity	10,303	13,098	27.1%
Not Hispanic or Latino	255,007	260,827	2.3%



Employment by Industry

	2000 US Census
Construction	7.6%
Health care and social assistance	11.1%
Manufacturing	29.9%
Retail trade	10.6%
Office and administrative support occupations	11.0%
Production	19.4%
Other	10.4%





Woodard Building (30 mile radius)

13761 Airport Road Laurinburg, NC 28352

Lat: 34.774583 Long:-79.614166

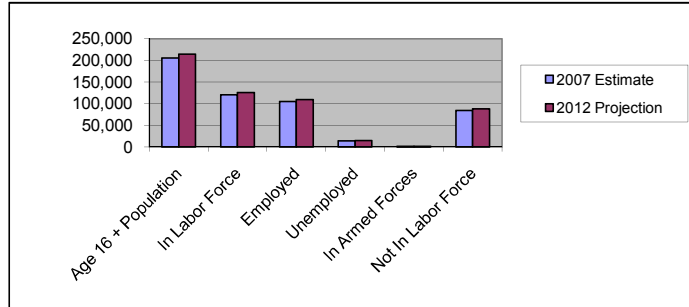
Maxton Pop: 1,881 Scotland County Pop: 37,601

Regional Data Summary Report

Labor Force

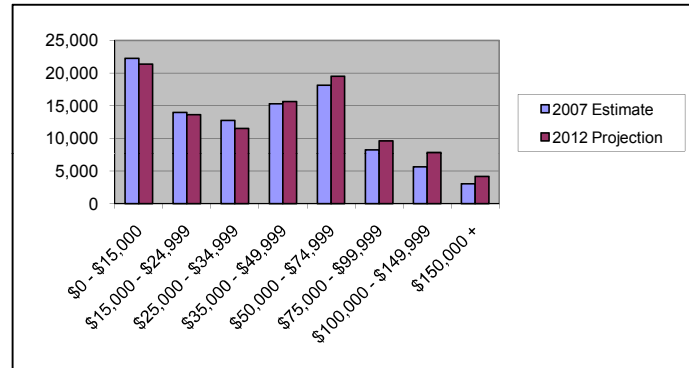
	2007 Estimate	2012 Projection	Percent Change 2007 to 2012
Age 16 + Population	205,923	214,809	4.3%
In Labor Force	120,296	125,406	4.2%
Employed	105,174	109,562	4.2%
Unemployed	13,881	14,449	4.1%
In Armed Forces	1,242	1,395	12.4%
Not In Labor Force	84,385	88,008	4.3%

2007 Number of Employees (Daytime Population)	93,436
2007 Number of Employers	8,219



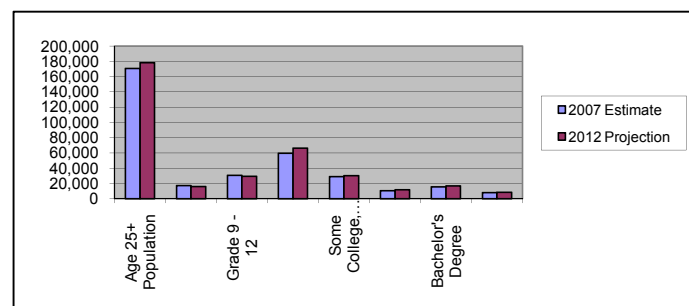
Households by Income

	2007 Estimate	2012 Projection	Percent Change 2007 to 2012
\$0 - \$15,000	22,262	21,362	-4.0%
\$15,000 - \$24,999	13,955	13,618	-2.4%
\$25,000 - \$34,999	12,765	11,499	-9.9%
\$35,000 - \$49,999	15,309	15,661	2.3%
\$50,000 - \$74,999	18,142	19,517	7.6%
\$75,000 - \$99,999	8,238	9,599	16.5%
\$100,000 - \$149,999	5,629	7,845	39.4%
\$150,000 +	3,047	4,150	36.2%
Average Hhld Income	\$42,237	\$43,938	4.0%
Median Hhld Income	\$35,609	\$39,311	10.4%
Per Capita Income	\$16,606	\$17,484	5.3%



Level of Educational Attainment

	2007 Estimate	2012 Projection	Percent Change 2007 to 2012
Age 25+ Population	170,494	178,308	4.6%
Grade K - 8	17,191	15,832	-7.9%
Grade 9 - 12	30,599	29,251	-4.4%
High School Graduate	59,734	66,056	10.6%
Some College, No Degree	28,921	30,054	3.9%
Associates Degree	10,665	11,793	10.6%
Bachelor's Degree	15,583	16,918	8.6%
Graduate Degree	7,801	8,406	7.8%



Current year data is for the year 2007. 5 year projected data is for the year 2012. More About Our Data.
Demographic data © 2007 by Experian/Applied Geographic Solutions.

© 2007. DemographicsNow is brought to you by SRC, LLC.

SRC, DemographicsNow.com and the SRC and DemographicsNow.com logos are trademarks of SRC, LLC. All rights reserved.